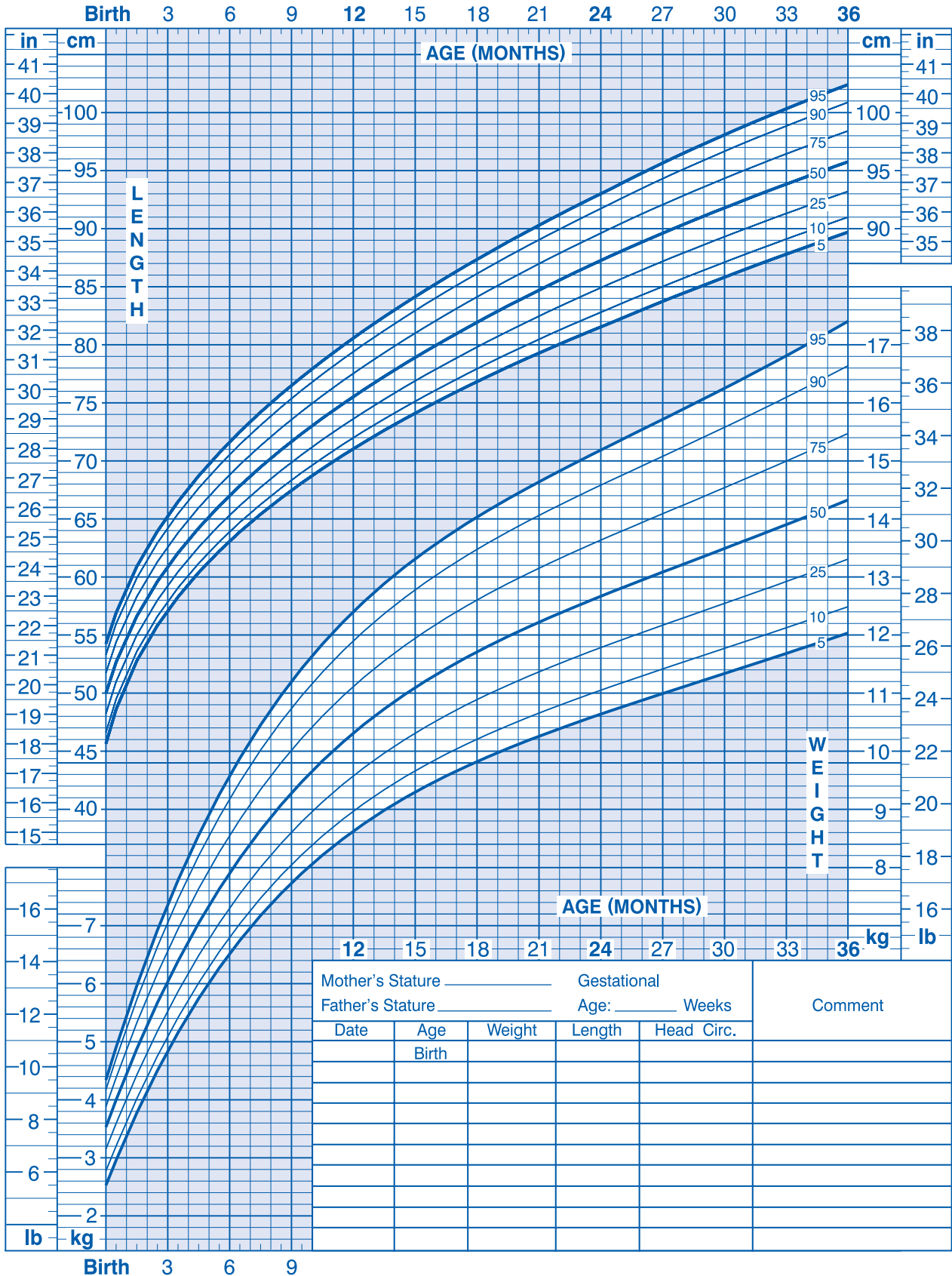




Birth to 36 months: Boys Head circumference-for-age and Weight-for-length percentiles

Name _____ Record # _____



Triple Tested for Quality, Safety & Nutrition

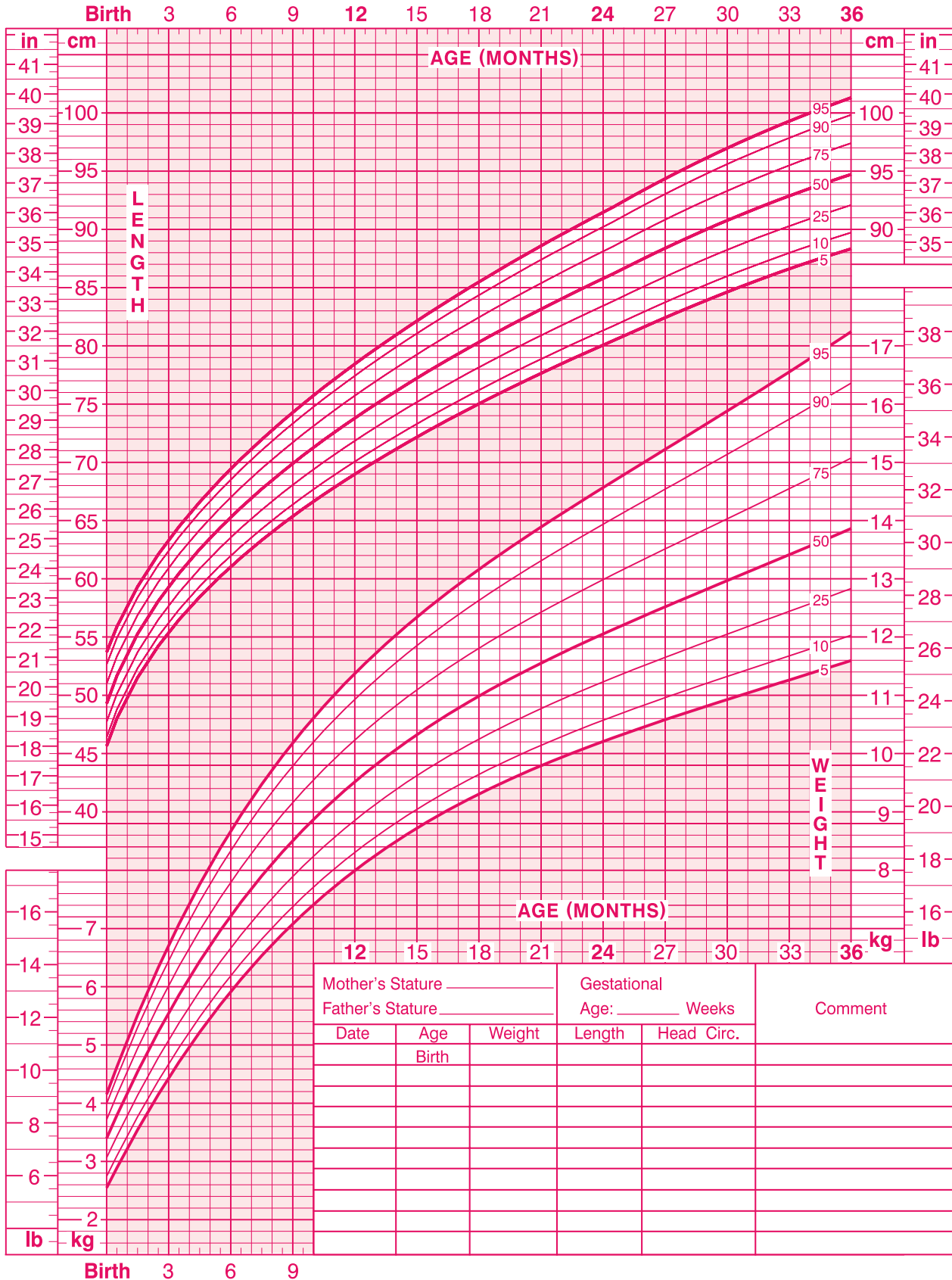
Mother's Stature _____		Gestational _____		Comment
Father's Stature _____		Age: _____ Weeks		
Date	Age Birth	Weight	Length	

Published May 30, 2000 (modified 10/16/00). Last reviewed June 2, 2009. SOURCE: Developed by the National Center for Health Statistics in collaboration with the National Center for Chronic Disease Prevention and Health Promotion (2000). <http://www.cdc.gov/growthcharts>
 This information is endorsed by The College of Family Physicians of Canada and is available on their web site www.cfpc.ca



Birth to 36 months: Girls Head circumference-for-age and Weight-for-length percentiles

Name _____ Record # _____



Triple Tested for Quality, Safety & Nutrition

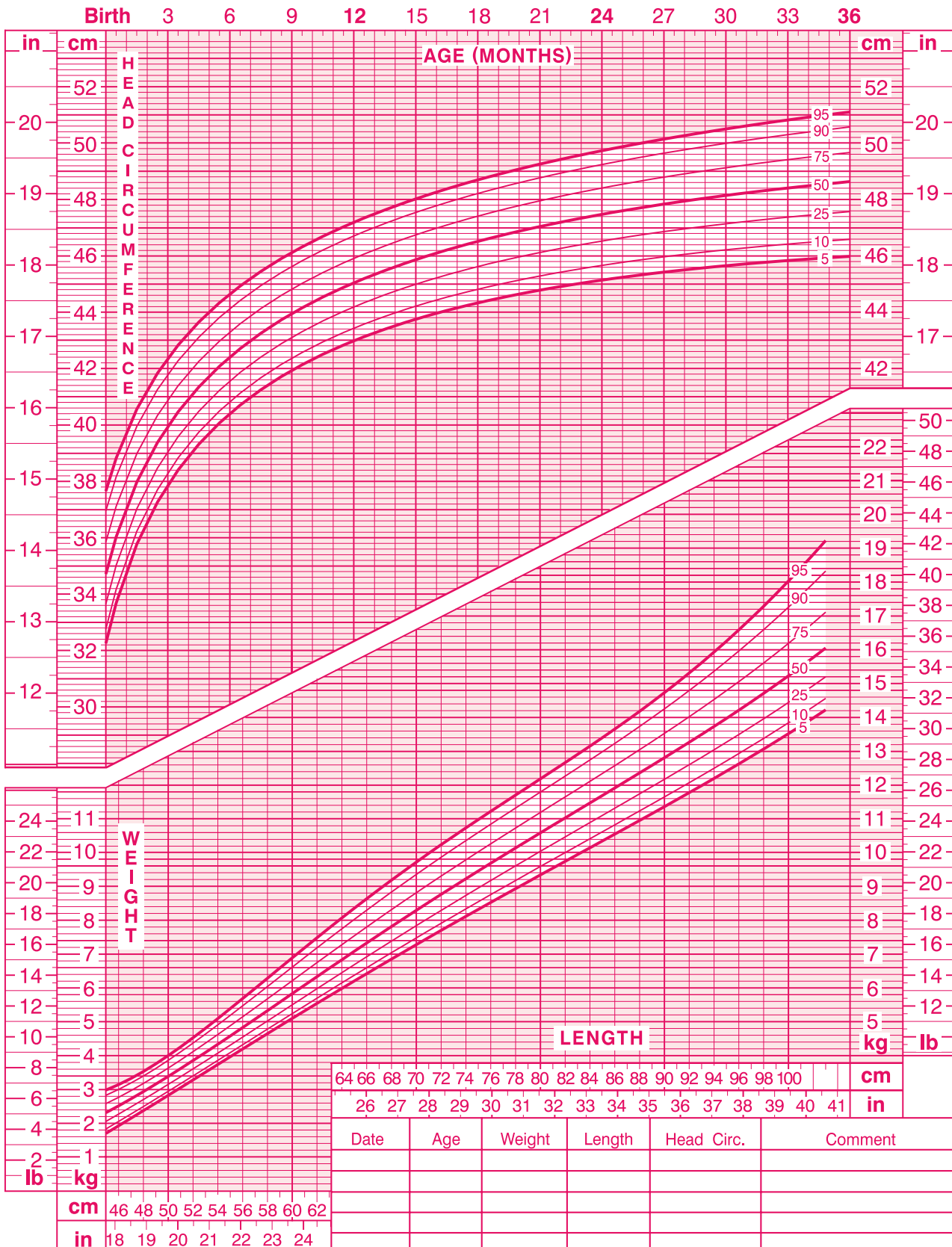
Mother's Stature _____		Gestational Age: _____ Weeks		Comment
Father's Stature _____		Length	Head Circ.	
Date	Age at Birth	Weight		

Published May 30, 2000 (modified 10/16/00). Last reviewed June 2, 2009. SOURCE: Developed by the National Center for Health Statistics in collaboration with the National Center for Chronic Disease Prevention and Health Promotion (2000). <http://www.cdc.gov/growthcharts>
 This information is endorsed by The College of Family Physicians of Canada and is available on their web site www.cfpc.ca



Birth to 36 months: Girls Head circumference-for-age and Weight-for-length percentiles

Name _____ Record # _____



Triple Tested for Quality, Safety & Nutrition

Published May 30, 2000 (modified 10/16/00). Last reviewed June 2, 2009. SOURCE: Developed by the National Center for Health Statistics in collaboration with the National Center for Chronic Disease Prevention and Health Promotion (2000). <http://www.cdc.gov/growthcharts> This information is endorsed by The College of Family Physicians of Canada and is available on their web site www.cfpc.ca